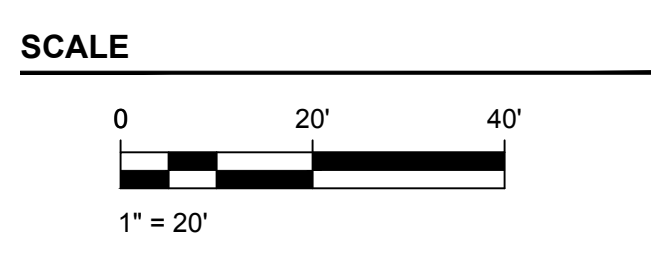
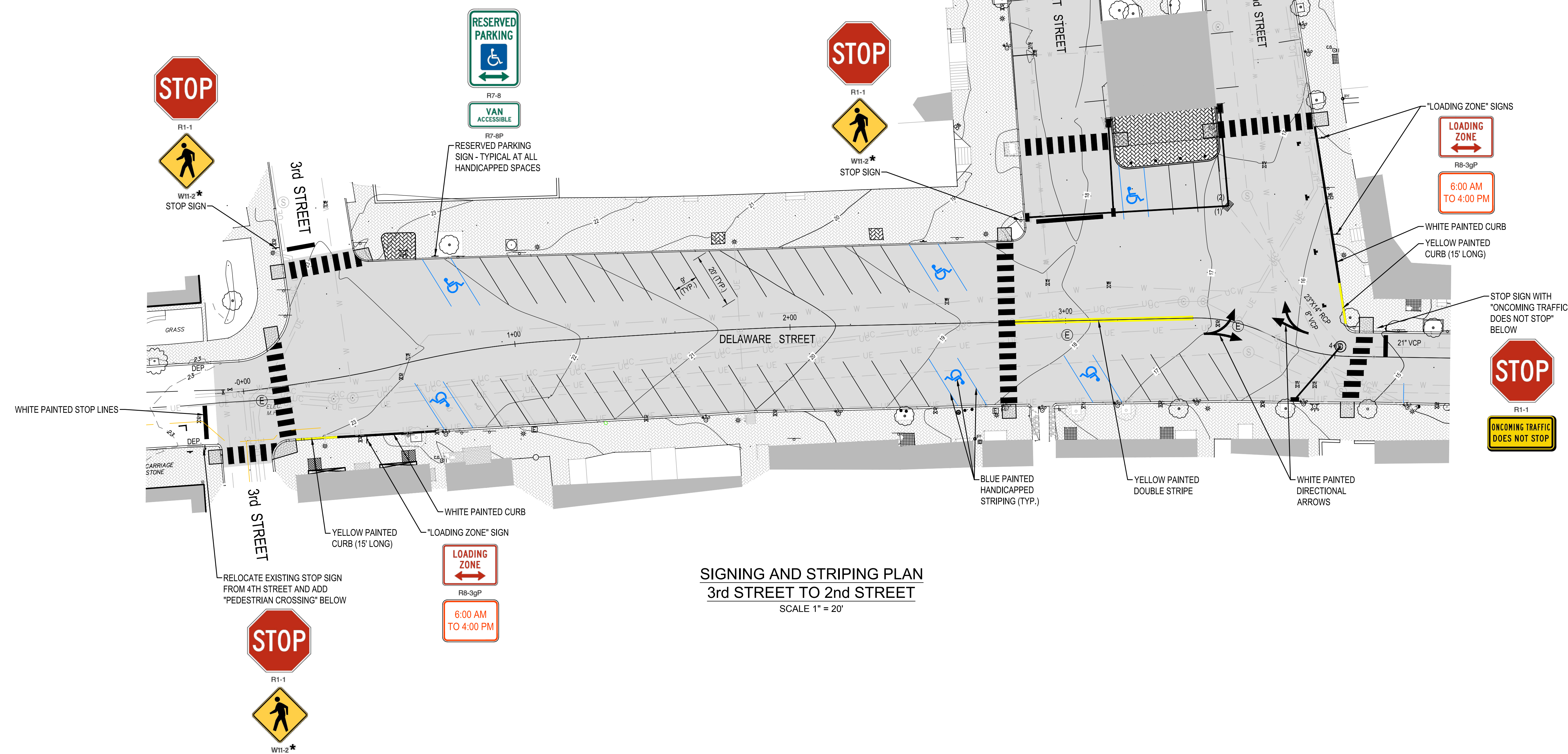
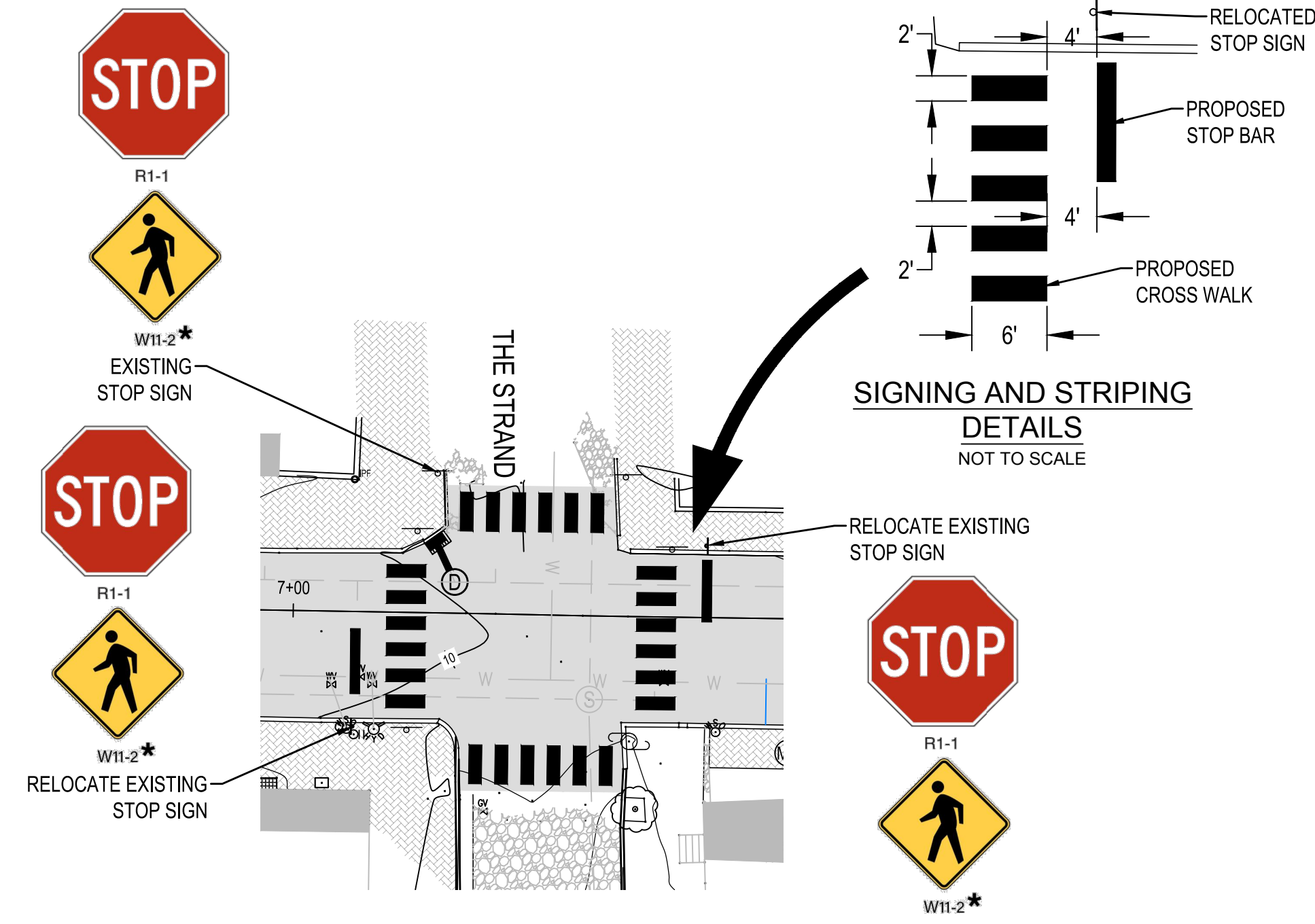


ARCH D 24" x 36" Approved: \_\_\_\_\_ Designer: \_\_\_\_\_ Checked: \_\_\_\_\_  
 Project Management Initials: \_\_\_\_\_

- PROPOSED LEGEND**
- PROPOSED CURB
  - PROPOSED BRICK SIDEWALK
  - PROPOSED OVERLAY
  - PROPOSED STORM INLET AND PIPE
  - PROPOSED SANITARY MANHOLE AND PIPE
  - PROPOSED ASPHALT SIDEWALK
  - PROPOSED CONCRETE SIDEWALK
  - 16.8 T.C. PROPOSED SPOT ELEVATION AT TOP OF CURB
  - 16.3 B.C. PROPOSED SPOT ELEVATION AT BOTTOM OF CURB
  - 16.8 x PROPOSED SPOT ELEVATION
  - PROPOSED PAINTED STOP BAR
  - PROPOSED ADA LANDING
  - EXISTING UTILITY / POLE TO BE RELOCATED  
(FINAL DETERMINATION BY MUNICIPAL SERVICES COMMISSION AND DELMARVA POWER)
  - EXISTING UTILITY TO BE RAISED/LOWERED  
(FINAL DETERMINATION BY MUNICIPAL SERVICES COMMISSION AND DELMARVA POWER)



**DRAFT**

**ISSUE/REVISION**

NO.	DATE	DESCRIPTION

**PROJECT NUMBER**  
 60519149

**SHEET TITLE**  
 SIGNING AND STRIPING PLAN

**SHEET NUMBER**  
 S-01